

Early On® Redesign Update

Michigan SICC Meeting
June 16, 2006

Updates regarding:

- Fiscal Study
 - Prevalence Report
 - System Update Results
 - Eligibility Determination Process
 - Eligibility Criteria
 - Tracking System
 - Management Structure
 - Next Steps
-

Fiscal Study

- Three Components

- Utilization
- Salary
- Cost
- Other revenue

- 29 ISDs are currently participating.

Utilization

- ❑ 585 of the anticipated 693 Child Questionnaires (84%) have been received and data entered
 - ❑ 632 of the anticipated 693 service summary sheets (93%) have been received and data entered.
 - ❑ 2/3 of the service encounter logs have been received and data entered.
 - ❑ Queries have been built and data analysis has begun.
-

Salary Survey

- ❑ The requests for the salary survey information were made to the ISDs on Friday, June 2.
 - ❑ Employer Salary Worksheets that contained the providers who were identified on the Service Summary Log were emailed to each ISD.
 - ❑ To date, 7 salary worksheets have been received.
-

Cost Survey

- The level of precision offered by the original instrument is not warranted for the current study.
 - We are evaluating alternatives to the current survey instrument and should have a workable solution by the end of next week.
-

Utilization Study Participants (Updated 6/15/2006)

Name	12/1/2005 Child Count	Region	Participating	participating Count	Size			
					< 50	> 50 < 150	150 to 300	301 and up
Allegan County ISD	155	sw	yes	26			1	
Alpena-Montmorency-Alcona	31	ne	No					
Barry ISD	44	sw	No					
Bay-Arenac ISD	179	ce	No					
Berrien ICC	187	sw	yes	37			1	
Branch ISD	73	sw	yes	13		1		
Calhoun ISD	173	sw	No					
Charlevoix-Emmet ISD	51	nw	yes	9				
Cheboygan-Otsego-Presque	54	ne	No					
Clare-Gladwin RESD	47	ce	Yes	11	1			
Clinton County RESA	77	ce	yes	10		1		
COOR ISD	64	ne	No					
Copper Country ISD	25	up	yes	6	1			
Delta-Schoolcraft ISD	82	up	yes	14		1		
Dickinson-Iron ISD	50	up	Yes	7		1		
Eastern Upper Peninsula ISD	34	up	Yes		1			
Eaton ISD	85	sw	Yes	22				
Genesee ISD	417	ce	No					
Gogebic-Ontonagon ISD	25	up	yes	6	1			
Gratiot-Isabella RESD	141	ce	yes	27		1		
Hillsdale ISD	91	se	Yes	21		1		
Huron ISD	13	ce	yes	4	1			
Ingham ICC	457	se	Yes	6				1
Ionia ICC	112	cw	No					
Iosco RESA	27	ne	No					
Jackson ISD	185	se	No					
Kalamazoo RESA	230	sw	No					
Kent ISD	661	cw	Yes	94				1
Lapeer County ISD	103	ce	Yes	18		1		
Lenawee ISD	79	se	Yes	14		1		
Lewis Cass ISD	55	sw	No					
Livingston ESA	131	se	Yes	28				
Macomb ISD	627	se	no					
Manistee ISD	23	nw	yes	5	1			
Marquette-Alger ISD	76	up	No					

How many children should we serve?

- Establish the population base
 - Review the eligibility definition
 - Tally the number of children currently served
 - Select a projection model
 - Collect data to build a statewide composite number
 - Decide how it will play a role in your system
 - Continue to review, refine and enhance
-

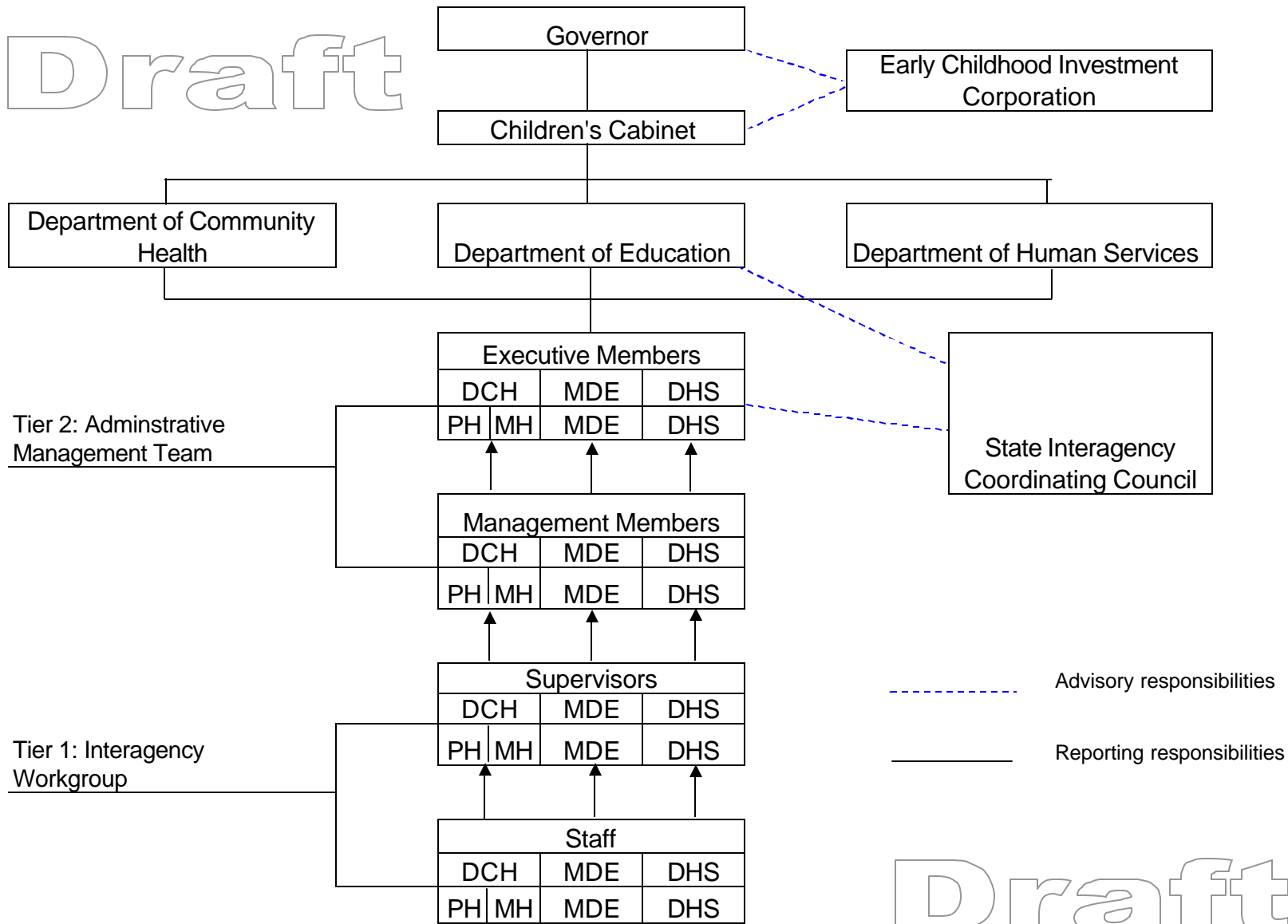
Why should we establish Prevalence?

- Benchmarks and planning
 - System design
 - Financing
 - Identifying resource and support needs
 - Quality assurance
 - Equity
 - Well being of children
 - Long and short term service gap identification
-

Prevalence Report

- Draft Document will be sent back to Eligible Population Task Force for review prior to general distribution
 - Intent to:
 - Provoke discussion;
 - Support strategic planning;
 - Assist in child find; and
 - Provide data to support program planning.
-

Draft



Draft

Next Steps

□ Fiscal Study

- Task Force to meet June 21-22 to review data from utilization study.
- Data match to identify resources provided by other agencies

□ Eligible Population Task Force

- Prevalence report and system update comments to be reviewed with final recommendations to the SICC in September
 - LICC Conference
-

Next Steps

- Management Structure
 - Draft document to move through other state agencies
 - Development of State Interagency Agreement
 - Development of Cross Agency Work Plan
 - Establish Documentation (Paperwork) Workgroup
 - Establish Resource Expansion Workgroup
 - Establish Service Definitions/Personnel Standards Workgroup
-